

CABLE CONNECTION CHAMBER EVO TC896/800/650

SPECIFICATION:

CABLE CONNECTION CHAMBER TC896/800/650 is made of polyethylene (PE100). Chamber is equipped with horizontal reinforcement rings to secure uplift retention. According to EN124, chamber is meant for pedestrian zones and parking areas. It should not be used under carriageways.

DIMENSIONS:

- Outer diameter - 896mm
- Inner diameter - 800mm
- Height - 650mm (can be made any height on demand)
- PE bottom (thickness 8mm)
1000x1000mm

ACCESSORIES:

- Concrete ring
- Cast iron cover 12,5t (B class)
- Fixings (3 pcs.)



APPLICATION AREA:

- Telecommunication networks
- Optical cable lines
- Electro cable lines
- Railroad signalization
- Street lighting



SYSTEM ADVANTAGES:

- Large inside diameter (ID800) gives large work space
- Horizontal ribs - stabilizes the chamber in soil and increases mechanical strength
- Easy transportation - no need of crane on construction site
- Fast creation of connection holes from inside
- Bright work space thanks to yellow colour of inside surface
- High resistance to corrosion and chemical substances
- Long service life (>50 years)
- Ring stiffness SN4

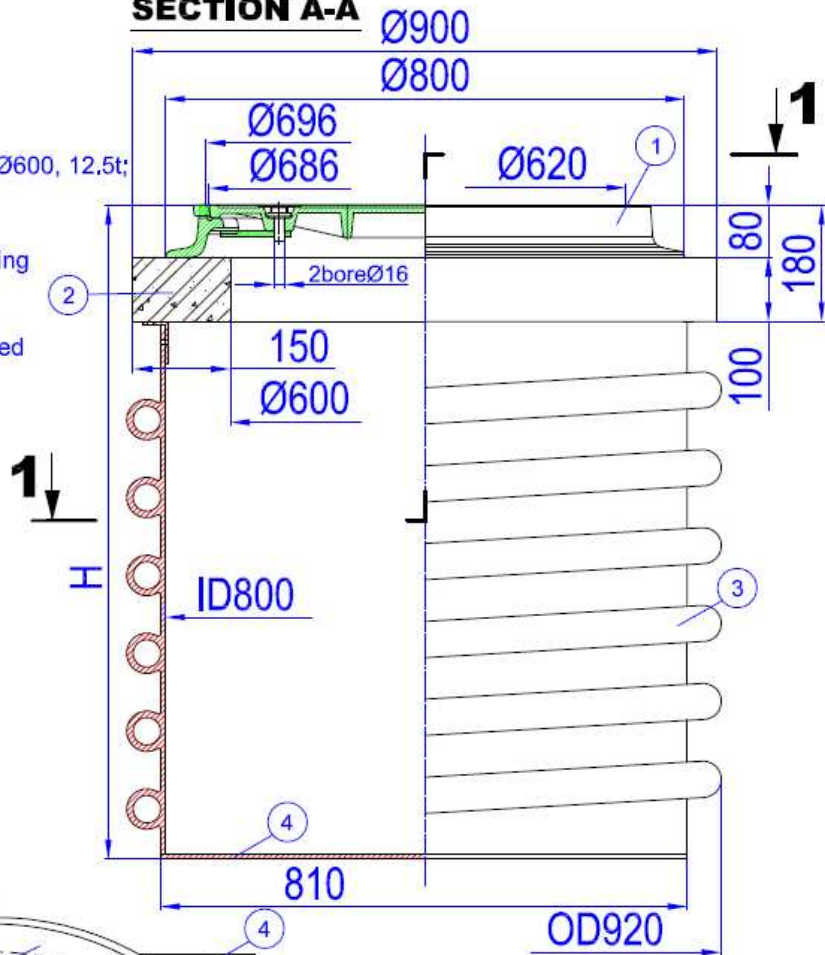
JSC "Žaliasis namas"
Draugystės str.19,
LT-51230, Kaunas,
Lithuania
Tel.: +370 698 73131
e-mail: petras@zaliasis-namas.lt

Telecom chamber TC 800 - Installation class B

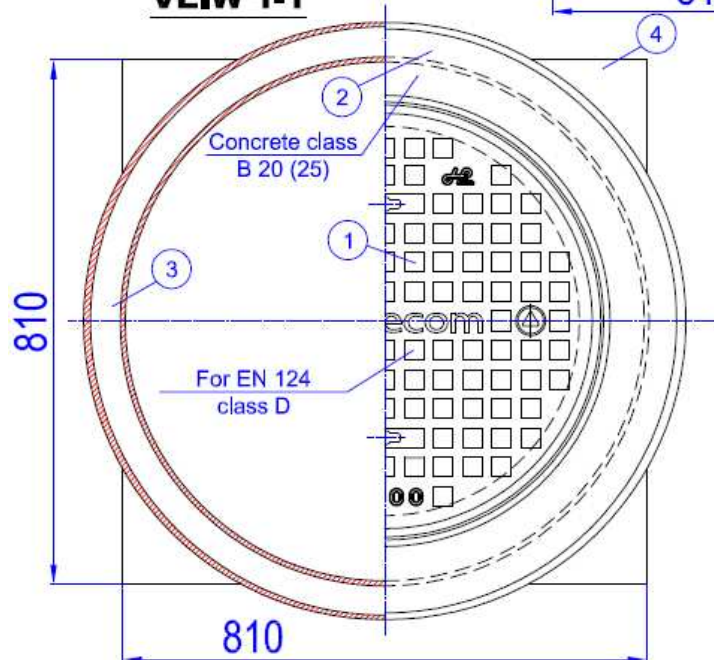
SECTION A-A

LEGEND:

- ① - Cast iron frame with a cover Ø600, 12.5t;
B-class in EN124-125kN,
Make LLKV-600B125;
- ② - reinforced concrete support ring
Ø900/600, h=100;
- ③ - PEHD, double-layer corrugated
shaft DN/ID800,
profile type PR42,
SN-4kN/m², OD896/ID800;
- ④ - PEHD chamber bottom
810 x 810 x 8.



VIEW 1-1



MODIFICATION:

TC 800 chamber can be ordered
with the following heights:
H=650mm;
H=1000mm;
H=1200mm.

NOTE:

1 kN/m² = 1 kPa;
All dimensions are in millimeters.