

Wall Box high Capacity WBH



FTTH - network termination

General Features

- Different configuration variants of fiber connections
 - Every Fiber Tray individually accessible for easy fiber access
 - Bend radius limitation of 30 mm for fibers
 - Boxes can be arranged on top of each other
 - 2 lockable wardrobe doors
 - Customer / subscriber separation secured with different key
 - Various top or bottom cable entry possibilities
 - Wall mounting at 4 points
 - For indoor applications
 - Robust steel construction
 - Powder coated light grey (RAL 7035)
 - Dimensions 448 × 395 × 148 mm (W×H×D)
- 3 different basic configurations can be achieved:
- Splice through
 - Splice/patch
 - Patch through



WBH – Splice Variants

Splice through



Specific features

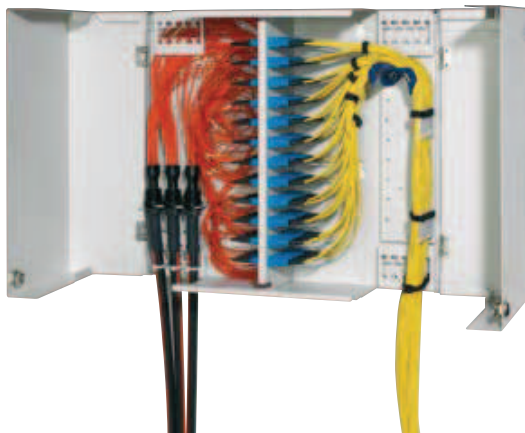
- Max. 144 splices with 6 cassettes
- Hinged Fiber Trays for instant fiber access
- Accommodates max. 6 Fiber Trays

Splice/patch



Specific features

- Max. 72 splices, resp. 144 with SFF with 6 cassettes
- Hinged Fiber Trays for instant fiber access
- Accommodates max. 6 Fiber Trays



Specific features

- Max. 72 fiber connections, resp. 144 with SFF
- For direct connection with MASTERLINE and/or PatchCords
- MASTERLINE snap-in gland design
- For fast installation

WBH - Accessories



Bend radius limiter	Unit.	Item no.
ODRF-SUBR-BEND-8M/4S-A1	8	84002996

Features

- Radius 35 mm
- For PatchCords
- Material HDPE, halogen free
- Blue (RAL 5005)
- Supplied with screws

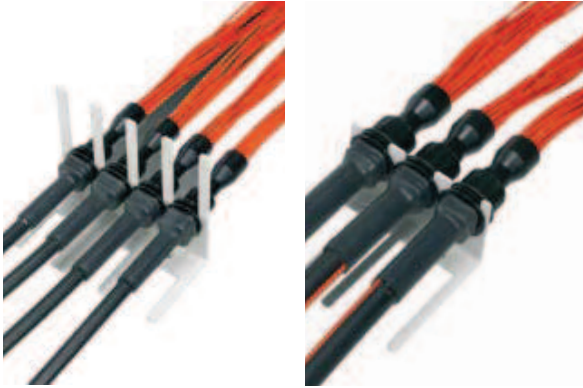


PatchCord guide	Unit	Item no.
WBH-PCG-STA-A1	1	84004954

Features

- Steel
- Powder coated, light grey (RAL 7035)
- Includes 12 Velcro ties and 2 fixing screws

WBH – Accessories



MASTERLINE gland bracket	Unit	Item no.
WBH-M/S-MGB-3/12-A1	1	84004296

Features

- To fix 12 small or 3 medium MASTERLINE classic dividers
- Steel
- Powder coated, light grey (RAL 7035)
- Includes 2 fixing screws



MASTERLINE gland bracket	Unit	Item no.
WBH-L-MGB-2-A1	1	84004290

Features

- To fix 2 large MASTERLINE classic dividers
- Steel
- Powder coated, light grey (RAL 7035)
- Includes 2 fixing screws

Wall Box WBC / WBH

Order code

	Description
	wall box type
WC -	wall box compact (WBC)
WH -	wall box high capacity (WBH)
	application
D	patch through variant
R	splice / patch variant (includes Fiber Tray)
S	splice through variant (includes Fiber Tray)
	colour of Fiber Tray
AP	NO Fiber Tray - patch through
BU	blue
YE	yellow
GY	grey
OG	orange
TQ	turquoise
RD	red
GN	green
n -	amount of Fiber Trays
0 -	no Fiber Tray - patch through
	front plate
xx	connector type (see connector/adapter code)
NX	no adapter plate fitted for «splice through» applications
P1	PIGCP TYPE 1 (FST-shape pigtail glands fitted with screw thread, max. 12)
P2	PIGCP TYPE 2 (small pigtail glands supplied with slotted fixing, max. 16)
XS	xpressPATCH for CTS Assemblies
nn	number of adapter or pigtail glands
00	empty
nn -	number of pigtails
00 -	empty
	pigtail fiber type / adapter performance
00	NO Pigtail or Adapter - splice through
09	singlemode 9/125 µm, OS2
50	multimode 50/125 µm, OM2
53	multimode 50 µm, OM3
54	multimode 50 µm, OM4 (OM3+)
62	multimode 62.5/125 µm, OM1
16	1.6 mm-2.2 mm cable type for PIGCP glands
23	2.3 mm-2.6 mm cable type for PIGCP glands
27	2.7 mm-3.2 mm cable type for PIGCP glands (suitable for 1.7mm duplex also)
30	3.0 mm diameter for CTS Assembly
	splice protection holder configuration
00	NO splice protection holder and NO protectors
S0	sandwich splice protection holder, protectors excluded

Wall Box WBC / WBH

S1	sandwich splice protection holder, protectors included
H0	heat shrink splice protection holder type Ø 1.8 × 40mm, protectors excluded
H1	heat shrink splice protection holder type Ø 1.8 × 40 mm, protectors included
H5	heat shrink splice protection holder type Ø 2.6 × 45 mm, protectors excluded
H6	heat shrink splice protection holder type Ø 2.6 × 45 mm, protectors included
colour code for pigtails	
0	no colour code (single coloured pigtails according to fiber class)
1	Swisscom colour code
2	DIN colour code
3	ISO colour code
0 -	standard configuration
brush strip configuration	
0	NO brush strip fitted
1	brush strip fitted
conduit (FBLT) configuration	
0	NO conduit (FBLT)
1	conduit (FBLT) fitted
bracket configuration left side	
0	NO bracket
S	small bracket for MASTERLINE or PG 9 cable gland fitting
M	medium bracket for medium MASTERLINE or PG 13.5 cable gland fitting
L	large bracket for large MASTERLINE
P	Patch Cord guide
n	number of bracket required
bracket configuration right side	
0	NO bracket required
S	small bracket for small MASTERLINE or PG 9 cable gland fitting
M	medium bracket for medium MASTERLINE or PG 13.5 cable gland fitting
L	large bracket for large MASTERLINE
P	Patch Cord guide
n	number of brackets required
performance class side A	
A	singlemode LAN-ECO
B	singlemode High-End
C	singlemode 0.1 dB
D	singlemode High-End UPC
E	singlemode High-Power
F	singlemode 0.1 dB UPC
M	multimode
N	singlemode LAN-ECO-UPC
K	no connector
performance class side B	
K	no connector (pigtail)