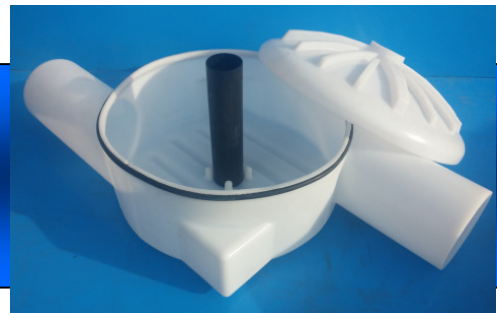




# OPTICS ACCESS CHAMBER WITH 2 INTERFACES FOR FOC COUPLING



**New transitional manhole for installation of fibre optic cable, with 2 interfaces for FOC coupling. For installation of continued or transmission cable and reserve.**

**The optics access chamber is:**

- made of: polyethylene (PE) using rotational moulding technology
- areas of use: optic cable continuation or reserve manhole
- weight: 18 kg
- diameter: 800 mm
- accessories: components include rubber penetration sleeves (2pcs)
- useful information: for 32 mm penetration sleeve use 48 mm milling cutter; for 50 mm penetration sleeve use 60 mm milling cutter

**In addition see:**

- technical drawing
- certificate
- [www.vesimentor.ee](http://www.vesimentor.ee)

